



**Batal Built Homes
at
Union Mills in Clifton, Virginia**

The Ashland II	\$148,900
The Ashland III	\$153,900
The Bridgeport II	\$141,900
The Bridgeport III	\$146,900
The Dover II	\$149,400
The Dover III	\$154,400
Walkout Basements	\$1,500
End Homes	\$3,000
The Chatham (Always an End Home)	
A -- with Garage	\$159,000
B -- with First Floor Family Room	\$160,500
C -- with First Floor Master Bedroom	\$162,200

Sales Manager: Collette Berrebi
Office: (703) 222-3040 Home: (703) 222-5550

Open Daily 11:00 am to 5:30 pm
Appointments available upon request

Prices subject to change without notice

Batal Built Homes

@

Union Mills in Clifton, Virginia

Luxury Features For Your Consideration

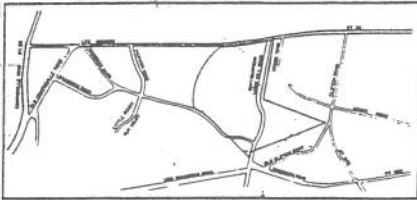
Lower Level Recreation Room	
Full Basement Home	\$ 4,000 ✓
Garage In Basement Home	\$ 3,000
Lower Level Full Bath	\$ 3,600 ✓
Lower Level Powder Room	\$ 2,800
Lower Level Three Piece Rough-In Plumbing	\$ 530 ✓
Lower Level Two Piece Rough-In Plumbing	\$ 450
Lower Level Den	\$ 2,200 ✓
Lower Level Wet Bar	\$ 1,125
Fireplace with Gas Logs and Remote Control	\$ 2,900
Back Yard Deck (10 x 14)	\$ 1,800
Ice Maker in Refrigerator	\$ 185
Garage Door Opener Installed (One control)	\$ 250
Luxury Bath with Spa Tub	\$ 2,300
Luxury Bath with Whirlpool Tub	\$ 3,300
Microwave Oven (installed)	\$ 500

Open daily 11:00 am to 5:00 pm

Phone (703) 222-3040

July 15, 1991

Prices subject to change without notice



VICINITY MAP
SCALE: 1"=1,000'



SITE TABULATION

SITE AREA (EXCLUDING RETAIL CENTER)		92.17 ACS.
ZONE		PDH-4
TOTAL UNITS		368
	ATTACHED	DETACHED
SECTION I	66	-
SECTION II	71	-
SECTION III	71	-
SECTION IV	65	-
SECTION V	38	-
SECTION VI	-	57
311*		57
(* INCLUDES 100 GARAGE UNITS.)		
SECTION VII (POOL)		1.42 ACS.
SECTION VIII (DAY CARE CENTER)		2.22 ACS.
OPEN SPACE REQUIRED		35.02 ACS.
OPEN SPACE PROVIDED		40.44 ACS**

NOTE: DOES NOT INCLUDE OPEN SPACE WITHIN SECTIONS VI AND VII.

UNION MILLS

FORMERLY
CENTREVILLE GREEN

DATE: MAY, 1988.
REVISED: OCTOBER 1989
REVISED: JANUARY 1991

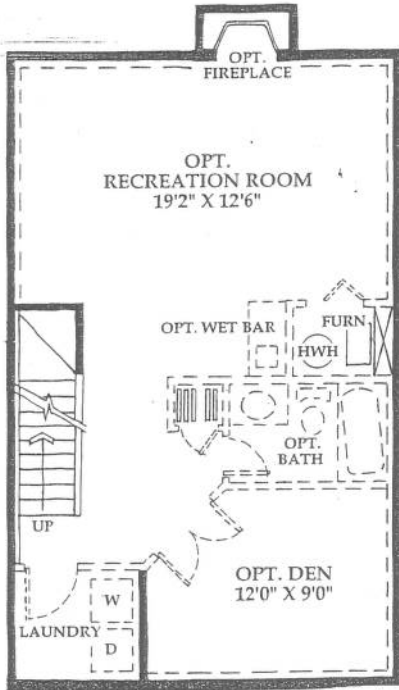
SCALE: 1"=100'

THIS PLAN IS FOR ILLUSTRATIVE PURPOSES ONLY AND IS SUBJECT TO CHANGE AS UNION MILLS DEVELOPS

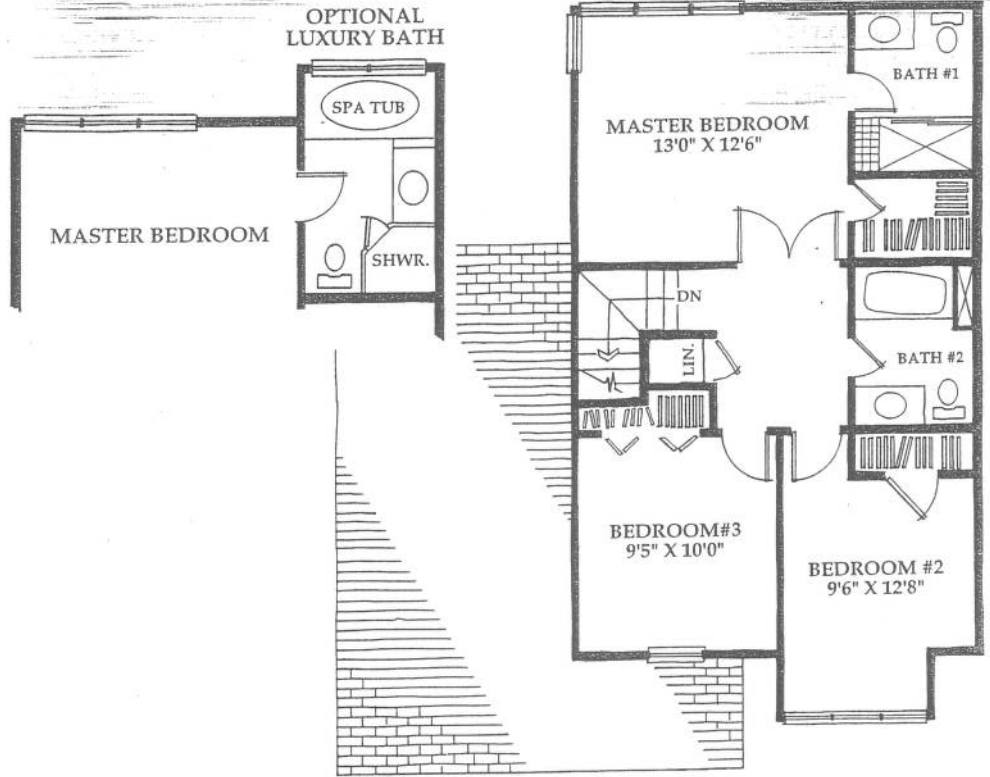
LEGEND
TRAIL

Dewberry & Davis
Engineers/Architects/Planners/Surveyors
2402 Jefferson Blvd., Fairfax, VA 22031
703/948-0500

THE CHATHAM

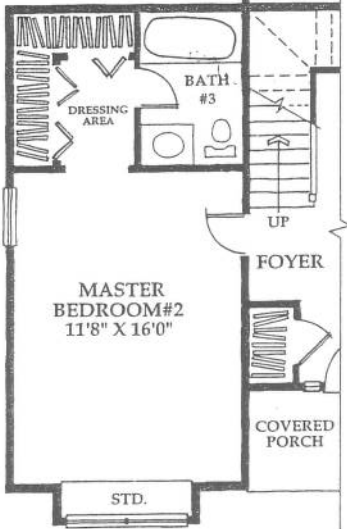


LOWER LEVEL

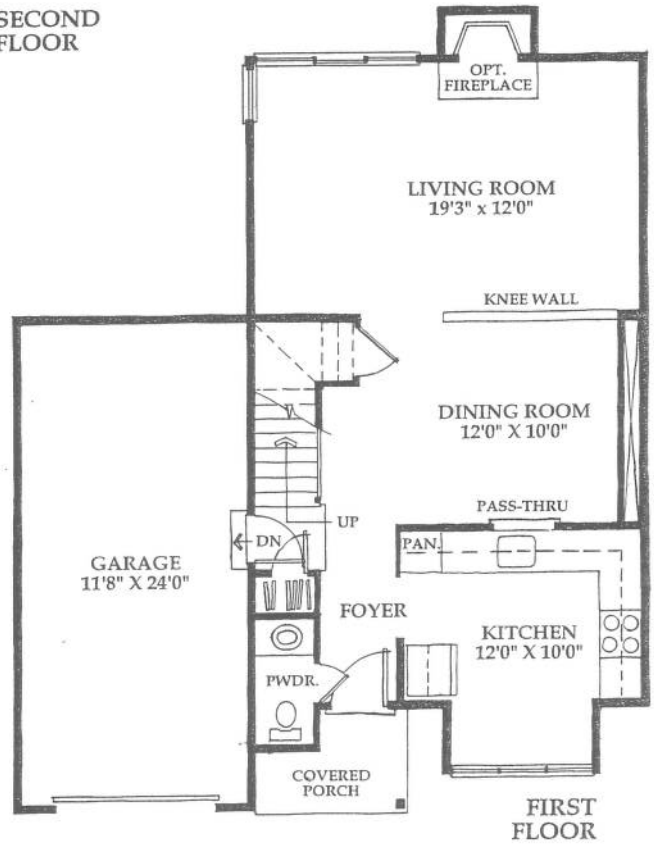
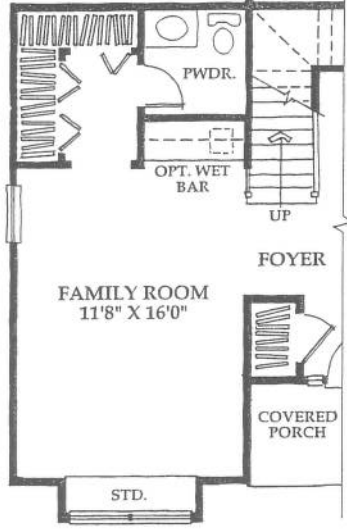


SECOND FLOOR

ALTERNATE FIRST FLOOR MASTER SUITE

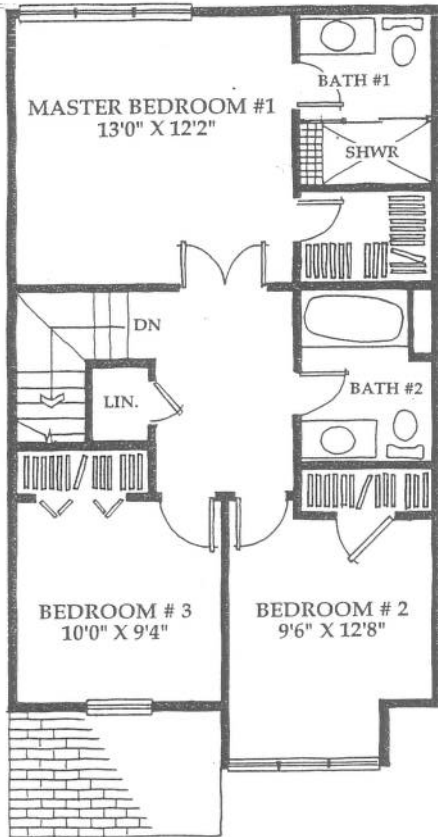


ALTERNATE FIRST FLOOR FAMILY ROOM

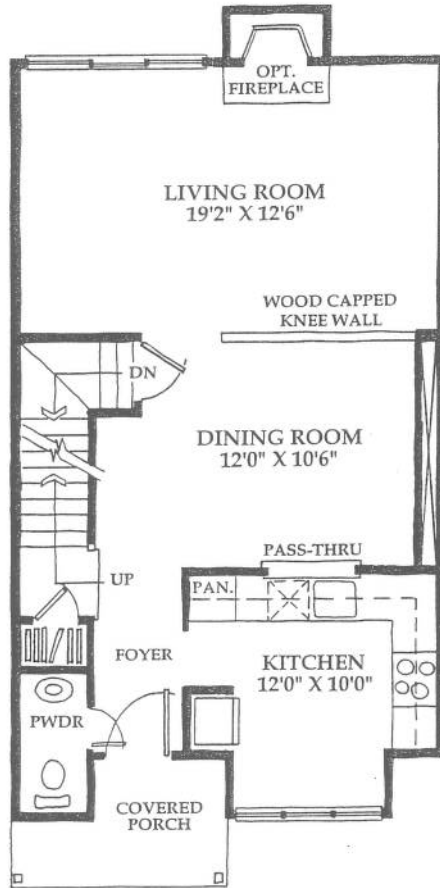
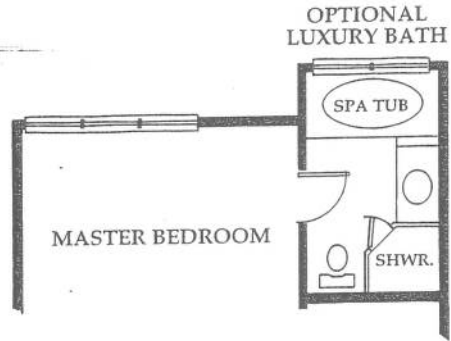


Illustrations and specifications are based on authorized information. Although descriptions are believed correct at publication, Batal Builders, Inc. reserves the right to make changes without notice or obligation. Floor plan dimensions are approximate.

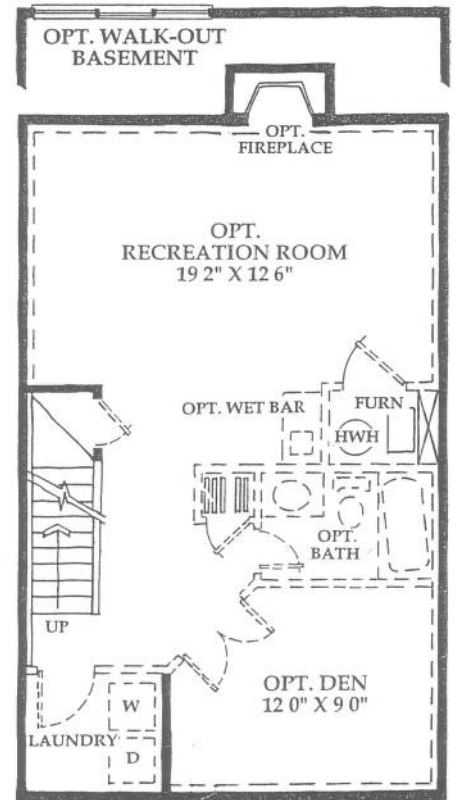
THE ASHLAND II



SECOND FLOOR



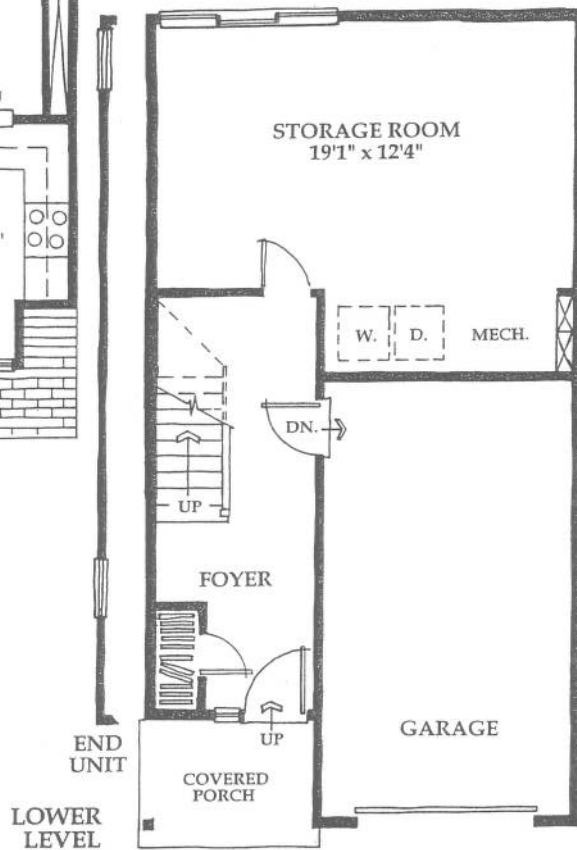
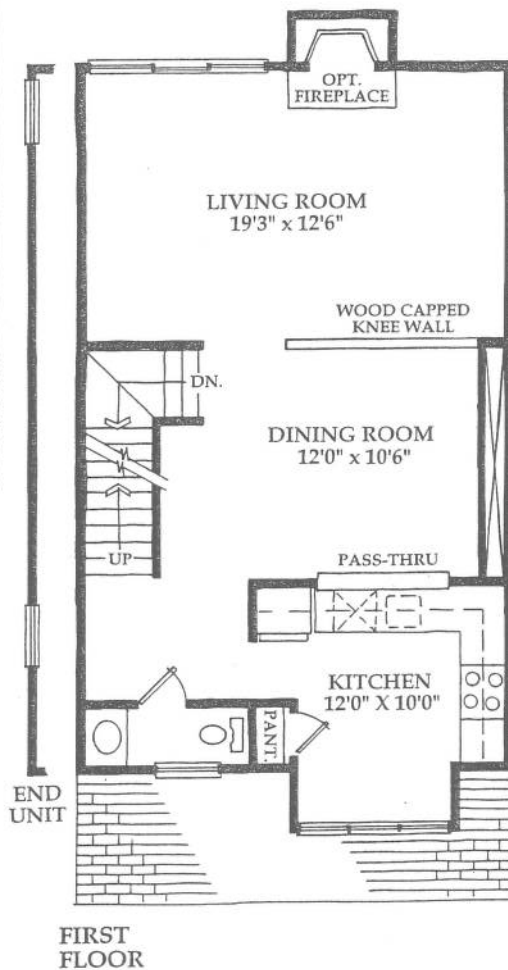
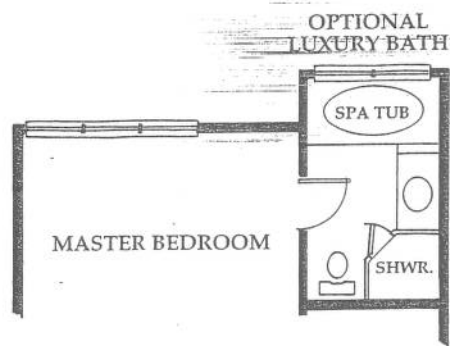
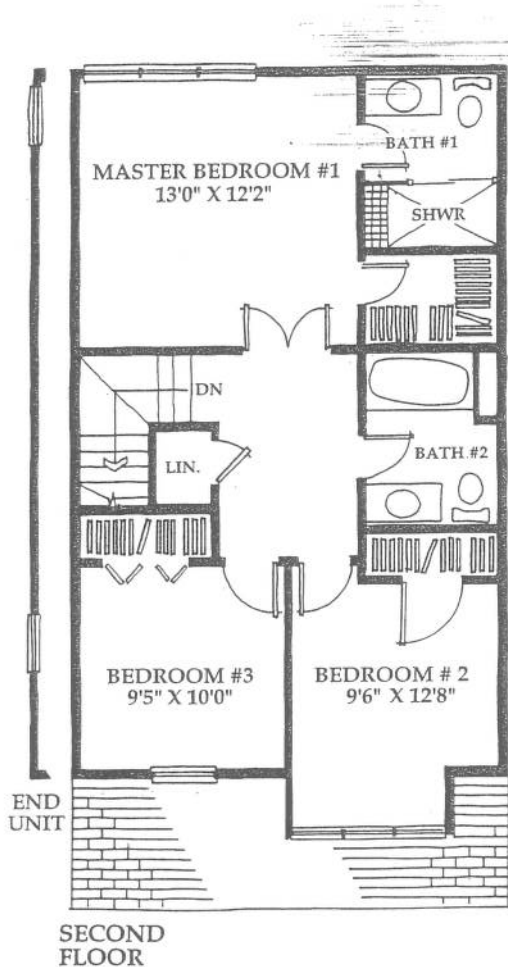
FIRST FLOOR



LOWER LEVEL

Illustrations and specifications are based on authorized information. Although descriptions are believed correct at publication, Batal Builders, Inc. reserves the right to make changes without notice or obligation. Floor plan dimensions are approximate.

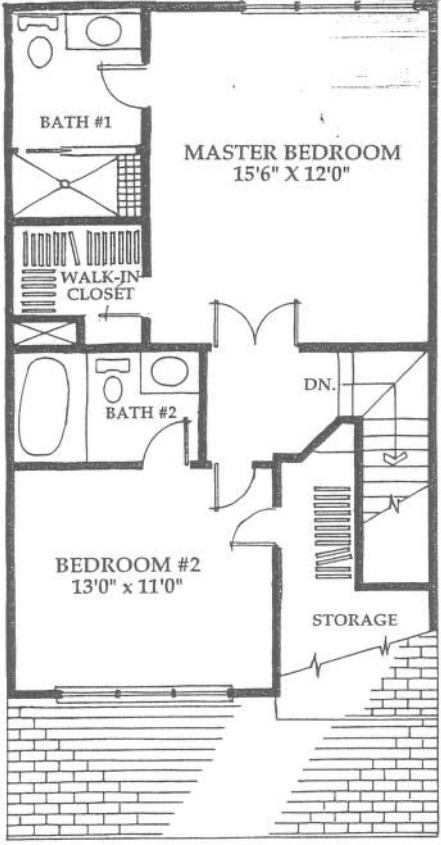
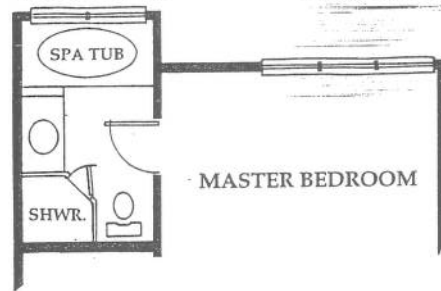
THE ASHLAND III



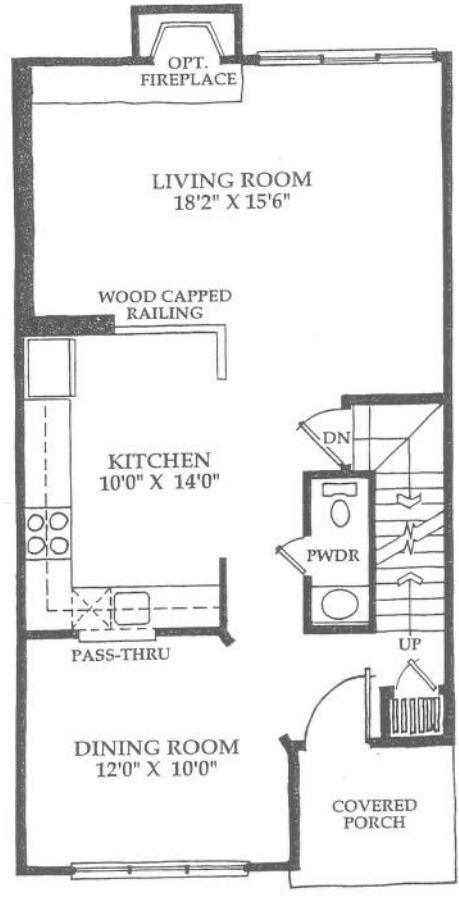
Illustrations and specifications are based on authorized information. Although descriptions are believed correct at publication, Batal Builders, Inc. reserves the right to make changes without notice or obligation. Floor plan dimensions are approximate.

THE BRIDGEPORT II

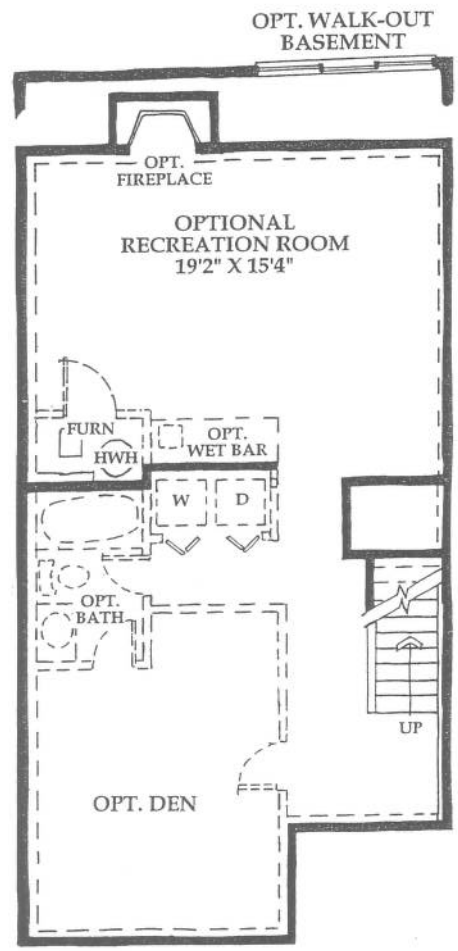
OPTIONAL LUXURY BATH



SECOND FLOOR



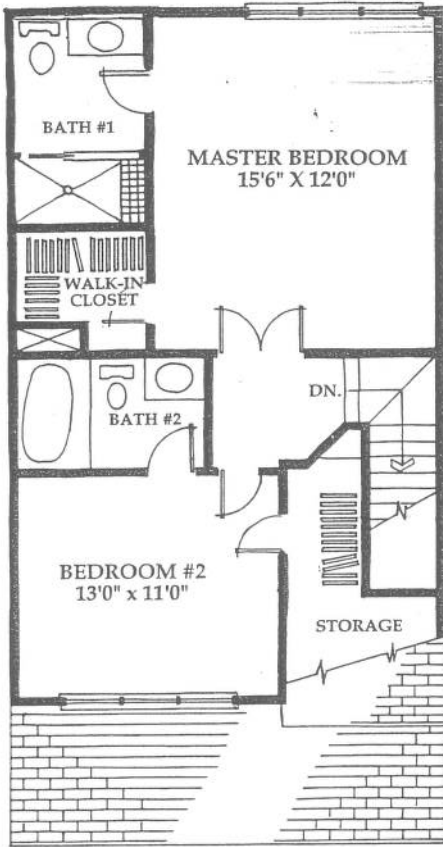
FIRST FLOOR



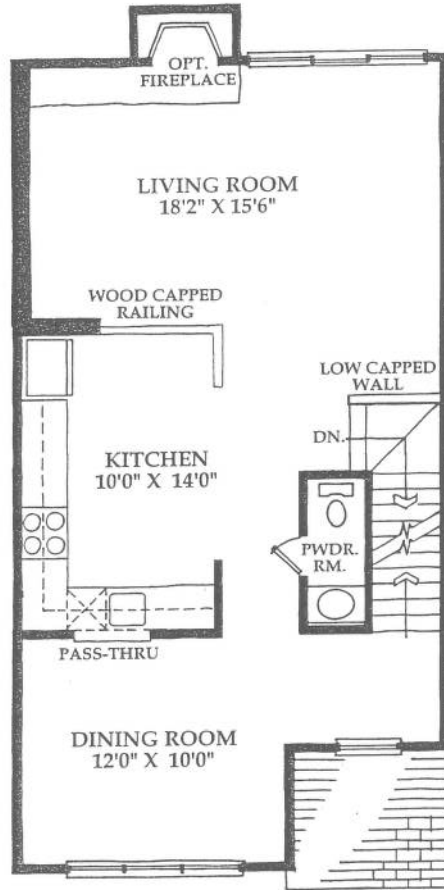
LOWER LEVEL

Illustrations and specifications are based on authorized information. Although descriptions are believed correct at publication, Batal Builders, Inc. reserves the right to make changes without notice or obligation. Floor plan dimensions are approximate.

THE BRIDGEPORT III

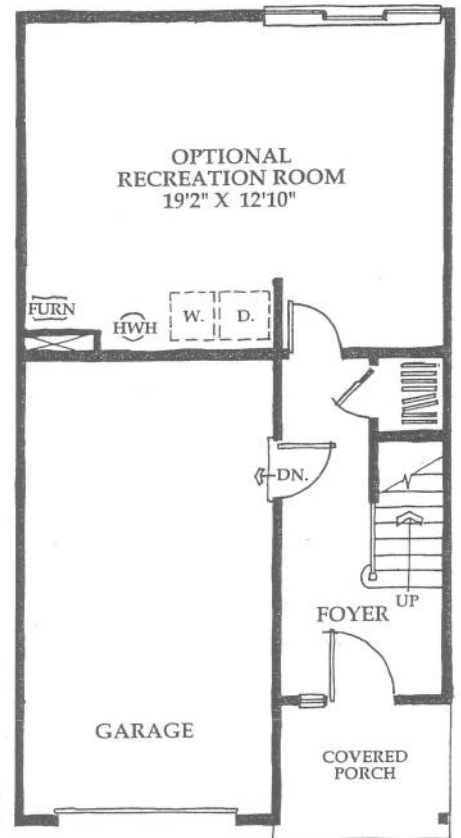
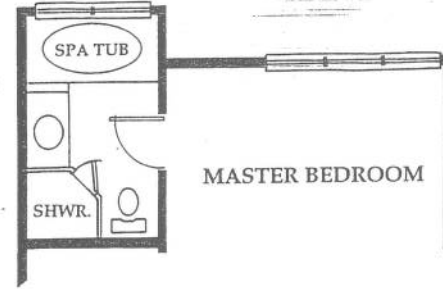


SECOND FLOOR



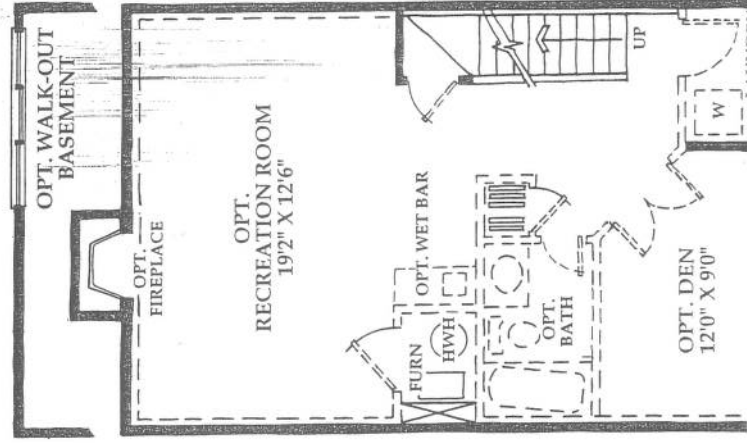
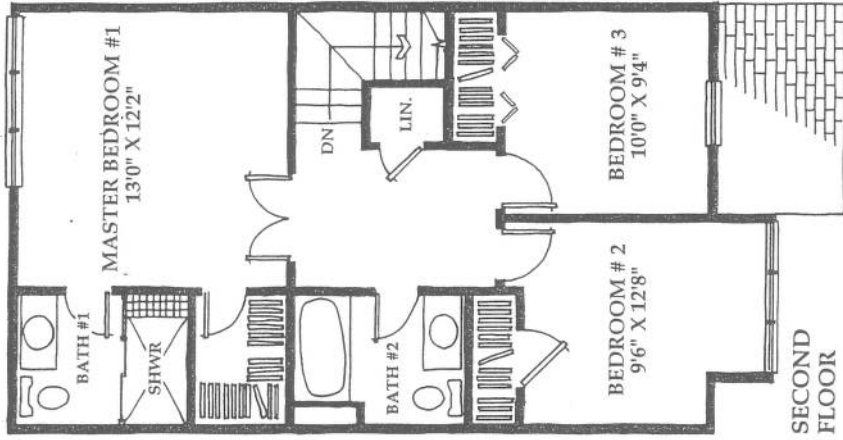
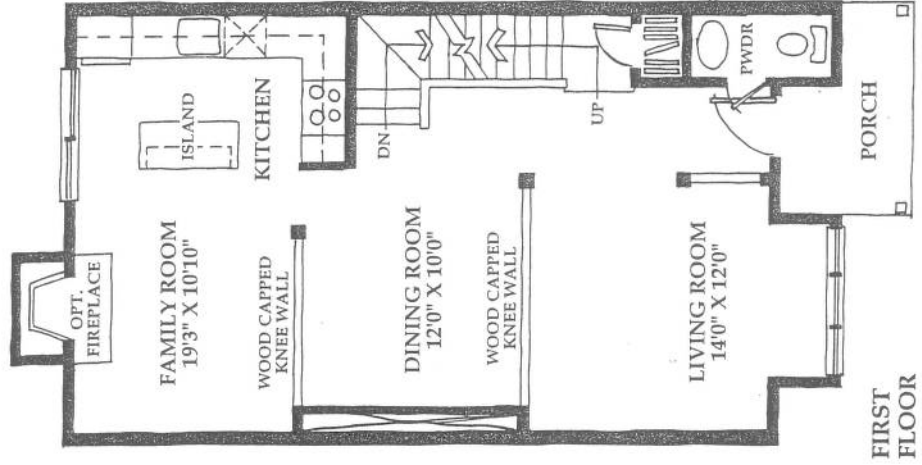
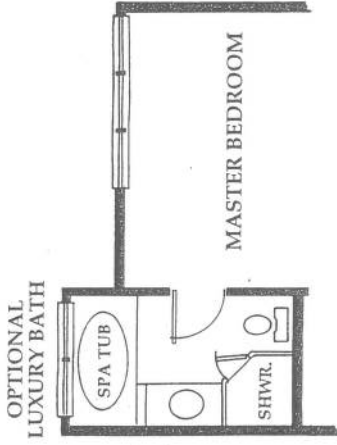
FIRST FLOOR

OPTIONAL LUXURY BATH

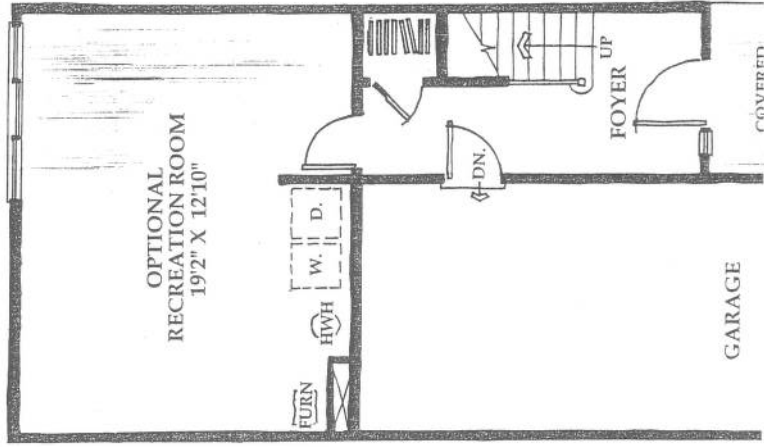
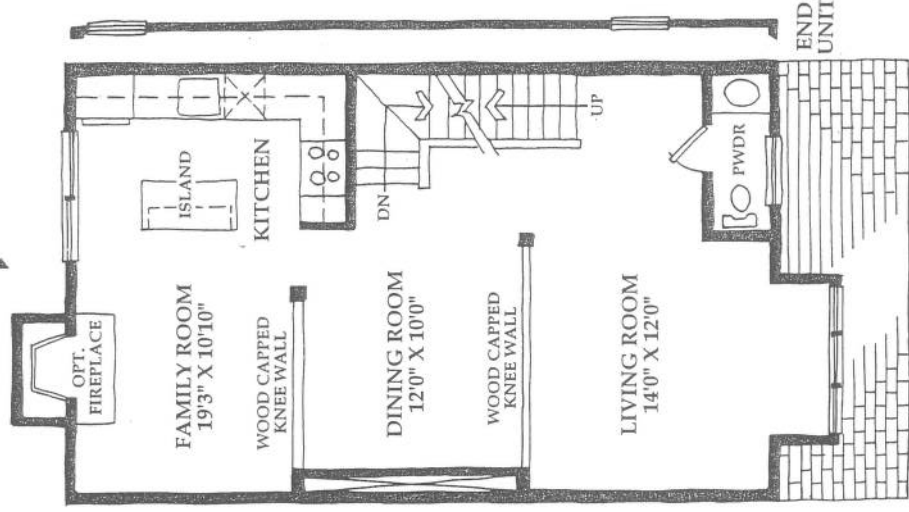
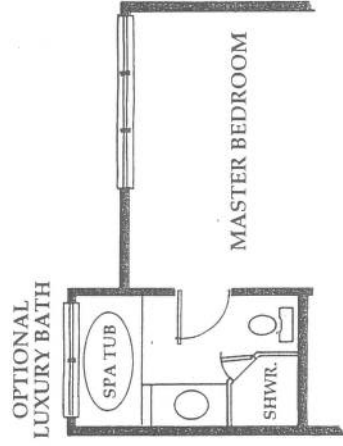


Illustrations and specifications are based on authorized information. Although descriptions are believed correct at publication, Batal Builders, Inc. reserves the right to make changes without notice or obligation. Floor plan dimensions are approximate.

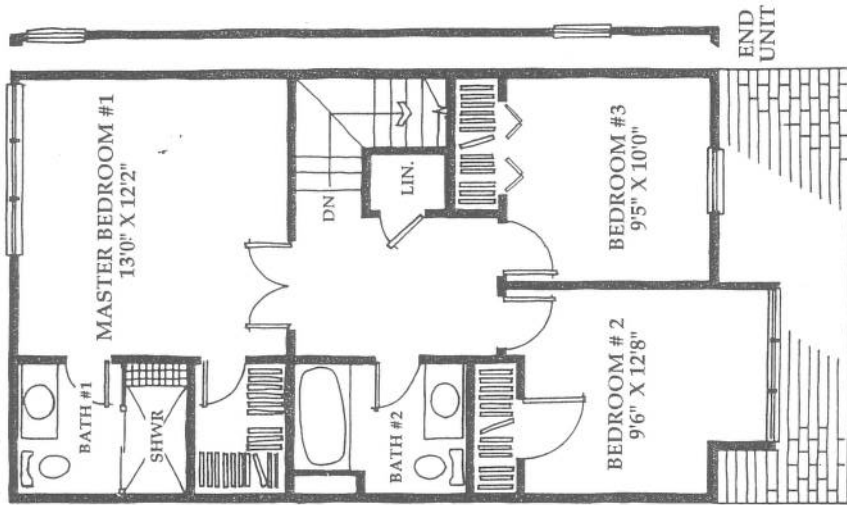
THE DOVER II



THE DOVER III



FIRST FLOOR



SECOND FLOOR